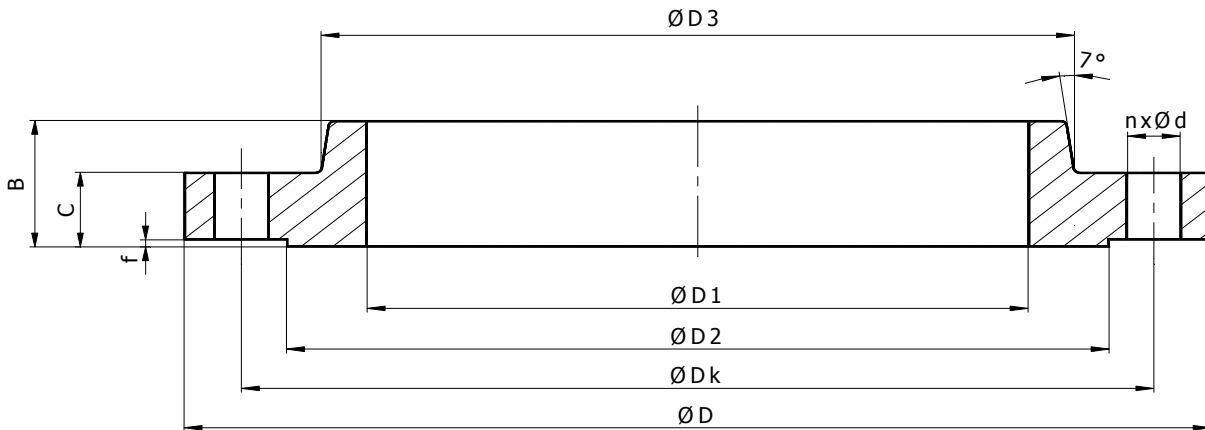




ZR "LIVAC"

**PRIRUBNICA RAVNA 150 Lbs
ANSI/ASME B 16.5**



DN	ØD	ØD _k	ØD ₁	ØD ₂	B	C	f	ØD ₃	Ød	n	m(kg)
1/2"	88.9	60.4	22.3	35.0	15.7	11.1	1.5	30.2	15.7	4	0.4
3/4"	98.5	69.8	27.6	42.9	15.7	12.7	1.5	38.1	15.7	4	0.7
1"	107.9	79.2	34.5	50.8	17.5	14.2	1.5	49.2	15.7	4	0.8
1 1/4"	117.3	88.9	43.1	63.5	20.5	15.7	1.5	58.6	15.7	4	1.1
1 1/2"	127.0	98.5	49.5	73.1	22.3	17.5	1.5	65.0	15.7	4	1.4
2"	152.4	120.6	61.9	91.9	25.4	19.0	1.5	77.7	19.0	4	2.2
2 1/2"	177.8	139.7	74.6	104.6	28.4	22.3	1.5	90.4	19.0	4	3.6
3"	190.5	152.4	90.6	127.0	30.2	23.8	1.5	107.9	19.0	4	4.1
3 1/2"	215.9	177.8	103.4	139.7	31.7	23.8	1.5	122.2	19.0	8	5.2
4"	228.6	190.5	116.0	157.2	33.2	23.8	1.5	134.8	19.0	8	5.6
5"	254.0	215.9	143.7	185.6	36.5	23.8	1.5	163.5	22.3	8	6.3
6"	279.4	241.3	170.6	215.9	39.6	25.4	1.5	192.0	22.3	8	7.5
8"	342.9	298.4	221.4	269.7	44.4	28.4	1.5	246.1	22.3	8	12.6
10"	406.4	361.9	276.3	323.8	49.2	30.2	1.5	304.8	25.4	12	18.5
12"	482.6	431.8	327.1	381.0	55.6	31.7	1.5	365.2	25.4	12	28.0
14"	533.4	476.2	359.1	412.7	57.1	35.0	1.5	400.0	28.4	12	36.0
16"	596.9	539.7	410.4	469.9	63.5	36.5	1.5	457.2	28.4	16	46.0
18"	635.0	577.8	461.7	533.4	68.3	39.6	1.5	504.9	31.7	16	50.0
20"	698.5	635.0	513.0	584.2	73.1	42.9	1.5	558.8	31.7	20	64.0
22"	749.3	692.1	564.4	641.2	79.4	46.0	1.5	609.6	34.9	20	72.0
24"	812.8	749.3	615.9	692.1	82.5	47.7	1.5	663.4	35.0	20	89.0